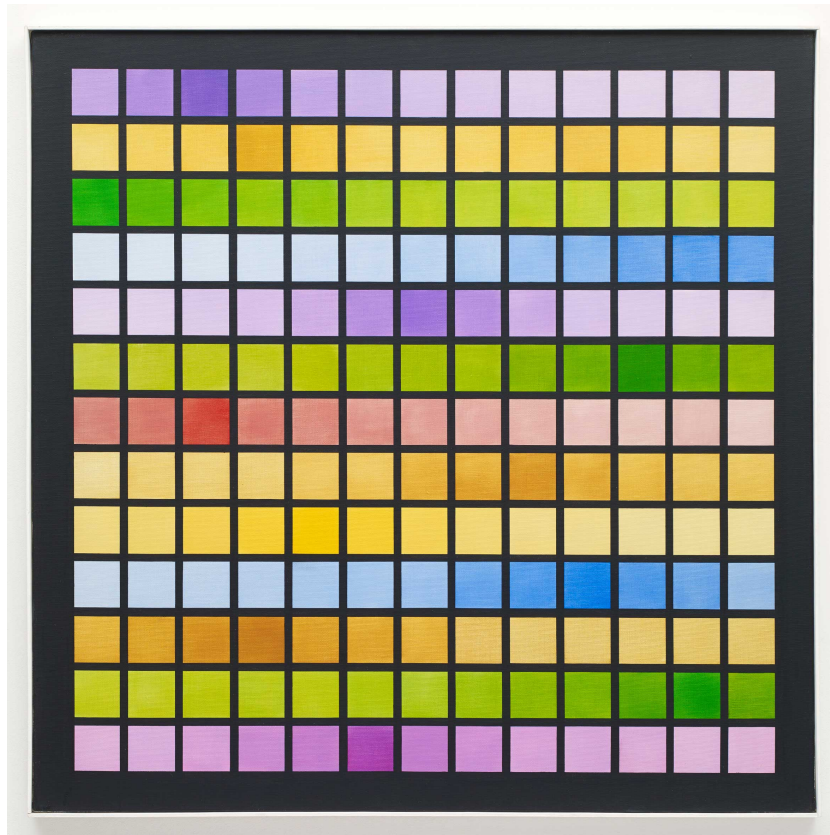


# Stephen Friedman Gallery

## Latin America from 1950 to 2020: A Personal Journey

Online Viewing Room  
Preview: Monday 30 March  
1-19 April, 2020



Stephen Friedman Gallery has built a reputation for its commitment over the last 25 years to championing artists from Latin America. The gallery inaugurates its Online Viewing Room (OVR) programme with a specially curated exhibition featuring works by celebrated historical and mid-career artists from South America who have formed a vital part of the gallery's history. The OVR is accompanied by a personal narrative from Stephen Friedman.

This new online facility coincides with the launch of a bespoke website to mark Stephen Friedman Gallery's 25<sup>th</sup> anniversary and allows us, in these challenging times, to share a selection of works that demonstrate the breadth and diversity of Latin American art over the last seventy years.

Artists include **Juan Araujo, Tonico Lemos Auad, Manuel Espinosa, Gego, Judith Lauand, Beatriz Milhazes, Rivane Neuenschwander, Mira Schendel** and **Luiz Zerbini**.

Stephen Friedman states: "Since the inception of the gallery, I have been committed to providing a platform for Latin American artists. It is incredibly important to me that the programme espouses an international outlook that is truly reflective of our time by exploring the economic, social and cultural dimensions of globalisation. I am proud to say that we have been supporting South American artists such as Juan Araujo, Tonico Lemos Auad, Manuel Espinosa, Rivane Neuenschwander and Luiz Zerbini at the gallery for over two decades. Along the way, we have also developed close relationships with Brazilian galleries such as Fortes D'Aloia & Gabriel and Galleria Luisa Strina, ones that I hope endure for many more years to come."

# Stephen Friedman Gallery

## Contact Us

Sales enquiries:  
sales@stephenfriedman.com.

General enquiries:  
info@stephenfriedman.com.

Press enquiries:  
Carlotta Dennis-Lovaglio at  
carlotta@scott-andco.com.

## Social Media

Instagram: @stephenfriedmangallery  
#sfgovr #stephenfriedmangallery  
#sfgsouthamerica

Facebook: /Stephen-Friedman-Gallery  
Twitter: @SFGalleryLondon

Venezuelan artist **Juan Araujo** explores the tangible remnants of Modernism in Western culture and art history. On view is a series of photorealistic paintings of the Barbican Complex in London, a utopian residential and cultural estate designed in the 1950s. An early projection piece is also presented that documents Vilanova Artigas's iconic Baeta House in São Paulo and examines the legacy of European Modernist architecture in Latin America.

Brazilian artist **Tonico Lemos Auad** explores physical manifestations of belief, specifically looking at the personal or cultural significance afforded objects in everyday life. Encompassing notions of architecture and landscape, the works exhibited here highlight Auad's subversion of traditional techniques associated with craft such as embroidery, woodcarving and metalwork.

Line, colour and the optical sensations of movement and light are the primary characteristics of **Manuel Espinosa's** work. A leading figure in the history of Argentine Modernism, Espinosa's paintings and drawings from the 1960s and 1970s feature circles and squares rendered in precise, serial configurations that seem to reverberate across the surface. A number of works from this period are presented.

Gertrude Goldschmidt, otherwise known as **Gego**, is one of Venezuela's most acclaimed artists. Exploring the nuances of Kineticism and Minimalism, Gego's wire sculptures and linear drawings investigate the spatial experience of mark making. Her inclusion in this presentation precedes a major solo exhibition of her work opening at Solomon R. Guggenheim Museum, New York in October 2020 before touring to Tate Modern, London next year.

**Judith Lauand**, the only female member of the avant-garde Grupo Ruptura movement, was a leading proponent of Concretism in Brazil during the 1950s. Harnessing the era's post-war optimism, her delicate yet regimented works on paper on view explore geometry, abstraction and the primacy of the picture plane as a self-contained entity.

**Beatriz Milhazes'** works combine cultural imagery from Brazil with Modernist influences from Europe, capturing rhythm, movement and depth in dazzling patterns of abstract shapes. The Online Viewing Room features a series of collages and editions that capture Milhazes's distinctive style, rooted in the colours and natural environment of Rio de Janeiro.

**Rivane Neuenschwander's** ephemeral practice draws on the history of Latin American conceptualism and explores the interplay between chance and order in everyday life. The artist often allows the influence of autonomous, transient forces – humans and animals being recurring elements – to dictate the production of her works.

Encompassing a broad range of media, **Mira Schendel's** work is underpinned by a philosophical and spiritual interest in the formal properties of language. Many of her works hover in the interstitial space between drawing and writing, creating a rich visual poetry that is uniquely her own. The drawings on view feature letters suspended and scattered across the surface of the page alongside works that explore the linguistic qualities of simple geometric shapes.

Dynamic and kaleidoscopic paintings by Brazilian artist **Luiz Zerbini** are also featured. Across his career, Zerbini has developed a complex visual vocabulary at the intersection of figuration and abstraction. Recent paintings by Zerbini use the grid as a compositional structure to consider the relationship between colour, light and movement. New works juxtapose organic and geometric patterns, evoking a blend of modernist architecture and lush tropical flora.

For sales enquiries, please contact sales@stephenfriedman.com.

For all press enquiries, please contact Carlotta Dennis-Lovaglio at carlotta@scott-andco.com.