

# Stephen Friedman Gallery

## Past Present



### Juan Araujo

Sculpture Landscape - Double Oval, 2018 - 2019

Oil on canvas

33 x 41cm

(13 x 16 1/8in)



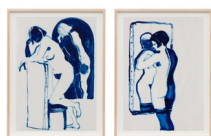
### Stephan Balkenhol

Venus of Kassel, 2016

Wawa wood

184.8 x 79 x 32cm

(72 7/8 x 31 1/8 x 12 5/8in)



### Lisa Brice

Untitled, 2020

Oil on tracing paper

Each: 41.9 x 29.6cm (16 1/2 x 11 5/8in)

Each framed: 50.2 x 38cm

(19 7/8 x 15in)



### Tom Friedman

Circle Dance, 2010

Highly polished stainless steel

Approximately 1.8 x 6.7m diameter

(6 x 22ft)



### Wayne Gonzales

Woman in the Garden, 2016 - 2017

Acrylic on canvas

218.4 x 167.6cm

(86 x 66in)

## Stephen Friedman Gallery



### Ged Quinn

Cut, 2015  
Oil on linen  
183 x 240cm  
(72 x 94 1/2in)



### Deborah Roberts

One history, two versions (Bullet Points), 2019  
Screenprint on Somerset Tub Sized 600gsm  
59.4 x 42cm  
(23 4/8 x 16 5/8in)



### Yinka Shonibare CBE

Discobolus (after Naukydes), 2017  
Unique cast fibreglass sculpture, hand-painted with Dutch wax Batik pattern,  
bespoke hand-coloured globe and gold leaf  
Sculpture: 175.5 x 85 x 60cm (69 1/8 x 33 1/2 x 25 1/2in)  
Plinth: 60 x 95 x 70cm (23 5/8 x 37 3/8 x 27 1/2in)  
Overall: 235.5 x 95 x 70cm (92 3/4 x 37 3/8 x 27 1/2in)