

# Stephen Friedman Gallery

## Yinka Shonibare CBE RA: African Spirits of Modernism

4 June – 31 July 2021



### Yinka Shonibare CBE

*Hybrid Sculpture (Sphinx), 2021*

Fibreglass sculpture, hand painted with Dutch wax pattern with hand carved wooden mask

Figure: 164 x 104 x 117cm (60 5/8 x 20 7/8 x 45 5/8in)

Plinth: 70 x 60 x 87.5cm (27 1/2 x 23 5/8 x 34 1/2in)

Overall: 224 x 60 x 116cm (88 1/4 x 23 5/8 x 45 5/8in)

(SHO 1033)



### Yinka Shonibare CBE

*Hybrid Sculpture (Pan), 2021*

Fibreglass sculpture, hand painted with Dutch wax pattern with hand carved wooden mask

Figure: 152 x 68 x 72cm (61 3/8 x 25 5/8 x 26 3/4in)

Plinth: 70 x 60 x 87.5cm (27 1/2 x 23 5/8 x 34 1/2in)

Overall: 226 x 65 x 87.5cm (89 x 25 5/8 x 34 1/2in)

(SHO 1034)



### Yinka Shonibare CBE

*Hybrid Sculpture (Centaur), 2021*

Fibreglass sculpture, hand painted with Dutch wax pattern with hand carved wooden mask

Figure: 165 x 68 x 121cm (64 5/8 x 25 5/8 x 45 5/8in)

Plinth: 70 x 57.5 x 130cm (27 1/2 x 22 5/8 x 51 1/8in)

Overall: 234 x 65 x 130 cm (92 1/8 x 25 5/8 x 51 1/8in)

(SHO 1035)



### Yinka Shonibare CBE

*Modern Magic (Studies of African Art from Picasso's Collection) I, 2020*

Patchwork, appliqué, embroidery and Dutch wax printed cotton textile

250 x 178.55cm

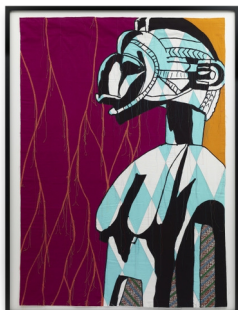
(98 3/8 x 70 1/4in)

Framed: 264.9 x 198.6 x 5.5 cm

104 1/4 x 78 1/4 x 2 1/8 in

(SHO 1036)

## Stephen Friedman Gallery



### Yinka Shonibare CBE

*Modern Magic (Studies of African Art from Picasso's Collection) II*, 2020

Patchwork, appliqué, embroidery and Dutch wax printed cotton textile

250 x 172.7cm

(98 3/8 x 68in)

Framed: 264.9 x 198.6 x 5.5 cm

104 1/4 x 78 1/4 x 2 1/8 in

(SHO 1072)



### Yinka Shonibare CBE

*Modern Magic (Studies of African Art from Picasso's Collection) V*, 2020 - 2021

Patchwork, appliqué, embroidery and Dutch wax printed cotton textile

Approx. 200 x 140cm

(78 3/4 x 55 1/8in)

Framed: 218.1 x 163.6 x 5.5 cm

85 7/8 x 64 3/8 x 2 1/8 in

(SHO 1074)



### Yinka Shonibare CBE

*Modern Magic (Studies of African Art from Picasso's Collection) IV*, 2020 - 2021

Patchwork, appliqué, embroidery and Dutch wax printed cotton textile

Approx. 200 x 150cm

(78 3/4 x 59 1/8in)

Framed: 218.1 x 163.6 x 5.5 cm

85 7/8 x 64 3/8 x 2 1/8 in

(SHO 1076)



### Yinka Shonibare CBE

*Modern Magic (Studies of African Art from Picasso's Collection) IX*, 2020 - 2021

Patchwork, appliqué, embroidery and Dutch wax printed cotton textile

146 x 104.3cm

(57 1/2 x 41 1/8in)

Framed: 163.6 x 123.1 x 5.5 cm

64 3/8 x 48 1/2 x 2 1/8 in

(SHO 1073)

## Stephen Friedman Gallery



### Yinka Shonibare CBE

*Modern Magic (Studies of African Art from Picasso's Collection) VI, 2020 - 2021*

Patchwork, appliqué, embroidery and Dutch wax printed cotton textile

Approx. 140 x 98cm

(55 1/8 x 38 5/8in)

Framed: 158.1 x 116.6 x 5.5 cm

62 1/4 x 45 7/8 x 2 1/8 in

(SHO 1075)



### Yinka Shonibare CBE

*Modern Magic (Studies of African Art from Picasso's Collection) VII, 2020 - 2021*

Patchwork, appliqué, embroidery and Dutch wax printed cotton textile

Approx. 140 x 100cm

(55 1/8 x 39 3/8in)

Framed: 158.1 x 116.6 x 5.5 cm

62 1/4 x 45 7/8 x 2 1/8 in

(SHO 1078)



### Yinka Shonibare CBE

*Modern Magic (Studies of African Art from Picasso's Collection) VIII, 2020*

Patchwork, appliqué, embroidery and Dutch wax printed cotton textile

90 x 140cm

(35 3/8 x 55 1/8in)

Framed: 111.1 x 157.1 x 5.5 cm

43 3/4 x 61 7/8 x 2 1/8 in

(SHO 1037)



### Yinka Shonibare CBE

*Modern Magic (Studies of African Art from Picasso's Collection) III, 2020*

Patchwork, appliqué, embroidery and Dutch wax printed cotton textile

140 x 70cm

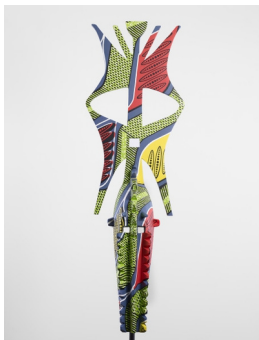
(55 1/8 x 27 1/2in)

Framed: 158.1 x 88.3 x 5.5 cm

62 1/4 x 34 3/4 x 2 1/8 in

(SHO 1071)

## Stephen Friedman Gallery



**Yinka Shonibare CBE**

*Hybrid Mask (Nwenka)*, 2021

Hand painted wooden mask on a brass clad plinth

173 x 56 x 50cm

(68 1/8 x 22 1/8 x 19 3/4in)

(SHO 1084)



**Yinka Shonibare CBE**

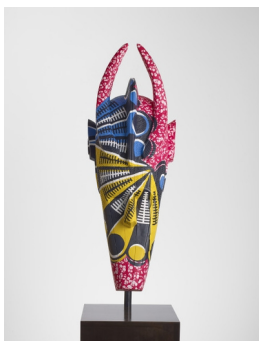
*Hybrid Mask (Fang Ngil)*, 2020 - 2021

Hand painted wooden mask on a brass clad plinth

70 x 29 x 26cm

(27 1/2 x 11 3/8 x 10 1/4in)

(SHO 1067)



**Yinka Shonibare CBE**

*Hybrid Mask (Banda)*, 2020 - 2021

Hand painted wooden mask on a brass clad plinth

78 x 28.8 x 24.4cm

(30 3/4 x 11 3/8 x 9 5/8in)

(SHO 1068)



**Yinka Shonibare CBE**

*Hybrid Mask (Fang)*, 2020 - 2021

Hand painted wooden mask on a brass clad plinth

33 x 19 x 16cm

(13 x 7 1/2 x 6 1/4in)

(SHO 1066)

## Stephen Friedman Gallery



**Yinka Shonibare CBE**

*Hybrid Mask (Ntomo)*, 2020 - 2021

Hand painted wooden mask with shells on a brass clad plinth

58 x 21.5 x 15.5cm

(22 7/8 x 8 1/2 x 6 1/8in)

(SHO 1069)



**Yinka Shonibare CBE**

*Hybrid Mask (K'peliye'e)*, 2020 - 2021

Hand painted wooden mask on a brass clad plinth

44 x 28.5 x 19cm

(17 3/8 x 11 1/4 x 7 1/2in)

(SHO 1070)