

Stephen Friedman Gallery
Study From The Human Body
14 March - 26 April 2014
Check List



HUMA BHABHA
Chain of Missing Links 2012
Wood, styrofoam, clay, wire, plexiglass, acrylic paint, weeds, seedpod, skull, rust, graphite and oilstick
258 x 97 x 74cm
(101 5/8 x 38 1/4 x 29 1/8in)
BHABHA 57



YOSHITOMO NARA
Julien 2012
Acrylic on jute mounted on wood
180.5 x 160.5cm
(71 x 63 1/4in)
NARA 237



JIRO TAKAMATSU
Shadow 1984/97
Acrylic on canvas
248.5 x 333.3cm
(97 7/8 x 131 1/4in)
TAKA 37



KENDELL GEERS
Flesh of the Spirit 68 2010
Bronze, unique
24 x 22 x 8cm
(9 1/2 x 8 5/8 x 8cm)
GEERS 768



KENDELL GEERS
Flesh of the Spirit 63 2010
Bronze, unique
31 x 10 x 10cm
(12 1/4 x 4 x 4in)
GEERS 765



KENDELL GEERS
Flesh of the Spirit 66 2010
Bronze, unique
23 x 15 x 7cm
(9 x 5 7/8 x 2 3/4in)
GEERS 770



KENDELL GEERS
Flesh of the Spirit 61 2010
Bronze, unique
28 x 10 x 10cm
(11 x 4 x 4in)
GEERS 767



KENDELL GEERS
Flesh of the Spirit 65 2010
Bronze, unique
34 x 18 x 8.5cm
(13 3/8 x 7 x 3 3/8in)
GEERS 771



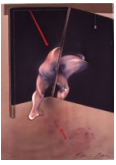
KENDELL GEERS
Flesh of the Spirit 62 2010
Bronze, unique
25.5 x 10 x 10cm
(12 1/4 x 4 x 4in)
GEERS 766



CATHERINE OPIE
Vaginal Davis 1994
C-print
152.4 x 76.2cm
(60 x 30in)
Framed: 177.8 x 81.3cm
(70 x 32in)
Edition 6 of 8+ 2 APs ap
OPIE 185



CATHERINE OPIE
Divinity Fudge 1997
C-print
152.4 x 76.2cm
(60 x 30in)
Edition 2 of 8
OPIE 133



FRANCIS BACON
Study from the Human Body 1981
Oil on Canvas
201 x 150cm (79 1/8 x 59in)
Framed: 217 x 167cm
(85 3/8 x 65 3/4in)
BACON 2



KEHINDE WILEY
Death of Chatterton 2014
Oil on canvas
104.5 x 195cm
(41 1/8 x 76 3/4in)
WILEY 22



TOM FRIEDMAN
Being 2009
Styrofoam balls and paint
220 x 55.9 x 58.4cm
(87 x 22 x 23in)
FRIE 125



YINKA SHONIBARE, MBE
Fire 2010
Mannequin, Dutch wax printed cotton textile, leather, wood, brass lamp stand, glass lamp shade,
circuit board, and LED
184 x 110 x 70cm
(72 1/2 x 43 1/4 x 27 1/2in)
SHO 589



DAVID SHRIGLEY
Life Model 2014
Mixed media
270 x 120 x 120cm
(106 3/8 x 47 1/4 x 47 1/4in)
SHRIG 1827



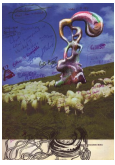
STEPHAN BALKENHOL
Woman in Black Dress 2014
Painted Wawa wood
165 x 25 x 19.5cm
(65 X 9 7/8 x 7 5/8in)
BAL 152



HENRY MOORE
Working Model for Reclining Figure 1945
Bronze with Black Patina
20 x 13.5 x 44.5cm
(7 7/8 x 5 3/8 x 17 1/2in)
MOORE 5



PAUL MCDEVITT
Notes to Self: 5 March 2014 2014
Ink, acrylic, and collage on paper
30 x 21cm (11 7/8 x 8 1/4in)
Framed size: 37 x 29cm
(11 7/8 x 11 3/8in)
MCD 283



PAUL MCDEVITT
Notes to Self: 14 March 2011(ii) 2011
Ink, ink jet print, and watercolour on paper
30 x 21cm (11 7/8 x 8 1/4in)
Framed size: 37 x 29cm
(11 7/8 x 11 3/8in)
MCD 289



PAUL MCDEVITT
Notes to Self: 25 February 2010 2010
Ink and blood on paper
30 x 21cm (11 7/8 x 8 1/4in)
Framed size: 37 x 29cm
(11 7/8 x 11 3/8in)
MCD 280



PAUL MCDEVITT
Notes to Self: 14 October 2011 2011
Ink and acrylic spray on paper
30 x 21cm (11 7/8 x 8 1/4in)
Framed size: 37 x 29cm
(11 7/8 x 11 3/8in)
MCD 287



PAUL MCDEVITT
Notes to Self: 25 February 2014 2014
Ink, acrylic, and oil on paper
30 x 21cm (11 7/8 x 8 1/4in)
Framed size: 37 x 29cm
(11 7/8 x 11 3/8in)
MCD 285



PAUL MCDEVITT
Notes to Self: 25 February 2010 (ii) 2010
Ink on paper
30 x 21cm (11 7/8 x 8 1/4in)
Framed size: 37 x 29cm
(11 7/8 x 11 3/8in)
MCD 281



PAUL MCDEVITT
Notes to Self: 2 March 2014 2014
Ink and oil on paper
30 x 21cm (11 7/8 x 8 1/4in)
Framed size: 37 x 29cm
(11 7/8 x 11 3/8in)
MCD 284



PAUL MCDEVITT
Notes to Self: 10 March 2010 2010
Ink on paper
30 x 21cm (11 7/8 x 8 1/4in)
Framed size: 37 x 29cm
(11 7/8 x 11 3/8in)
MCD 292



PAUL MCDEVITT
Notes to Self: 2 November 2011(ii) 2011
Ink, watercolour, and acrylic on paper
30 x 21cm (11 7/8 x 8 1/4in)
Framed size: 37 x 29cm
(11 7/8 x 11 3/8in)
MCD 286



PAUL MCDEVITT

Notes to Self: 28 September 2009 2009

Ink and acrylic on paper

30 x 21cm (11 7/8 x 8 1/4in)

Framed size: 37 x 29cm

(11 7/8 x 11 3/8in)

MCD 294