

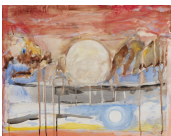
Isabel Nolan
Stephen Friedman Gallery
No.11 Old Burlington Street
11 October - 19 November 2011



- 3 ISABEL NOLAN
Kiss the Machine 2011
Steel, fabric, thread and MDF,
Object: 125 x 133 x 78cm
(49 1/8 x 52 3/8 x 30 3/4in)
Base: 23 x 85 x 85cm
(9 1/8 x 33 1/2 x 33 1/2in)
NOLAN 2



- 5 ISABEL NOLAN
Eventually into darkness 2011
Steel, paint and wood,
Object: 58 x 67 x 45cm
(22 7/8 x 26 3/8 x 17 3/4in)
Base: 103 x 39 x 39cm
(40 5/8 x 15 3/8 x 15 3/8in)
NOLAN 3



- 6 ISABEL NOLAN
Cold Horizon 2011
Watercolour and waterbased oil on canvas,
35 x 45cm
(13 7/8 x 17 5/8in)
NOLAN 6



- 7 ISABEL NOLAN
Colourhole 2011
Steel, fabric, embroidery thread and thread,
76 x 40 x 35cm
(29 7/8 x 15 3/4 x 13 7/8in)
NOLAN 8



- 9 ISABEL NOLAN
'Near past, recent future' 2011
Balsa, jesmonite and paint,
93 x 88 x 1.3cm
(36 5/8 x 34 5/8 x 1/2in)
NOLAN 10