

Stephen Friedman Gallery  
Catherine Opie  
22 November 2011 - 21 January 2012  
Check List

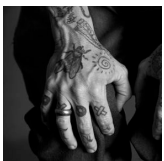
---



- 1 CATHERINE OPIE  
Back with Arms (Kate) 2008  
C-print, Edition 2 of 8  
Image size:  
20.3 x 20.3cm (8 x 8in)  
Framed: 37.5 x 37.5 x 3.5cm  
(14 x 14 x 1 3/8in)  
OPIE 176



- 2 CATHERINE OPIE  
Feet (Ian) 1994  
C-print, Edition 2 of 8  
Image size:  
20.3 x 20.3cm (8 x 8in)  
Framed: 37.5 x 37.5 x 3.5cm  
(14 x 14 x 1 3/8in)  
OPIE 173



- 3 CATHERINE OPIE  
Hand (Pig Pen) 2009  
C-print, Edition 2 of 8  
Image size:  
20.3 x 20.3cm (8 x 8in)  
Framed: 37.5 x 37.5 x 3.5cm  
(14 x 14 x 1 3/8in)  
OPIE 169



- 4 CATHERINE OPIE  
Cathy (bed self-portrait) 1987  
C-print, Edition 4 of 8  
Image size:  
20.3 x 20.3cm (8 x 8in)  
Framed: 37.5 x 37.5 x 3.5cm  
(14 x 14 x 1 3/8in)  
OPIE 163



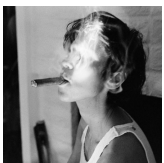
- 5 CATHERINE OPIE  
The Gang 1990  
C-print, Edition 2 of 8  
Image size:  
20.3 x 20.3cm (8 x 8in)  
Framed: 37.5 x 37.5 x 3.5cm  
(14 x 14 x 1 3/8in)  
OPIE 172



- 6 CATHERINE OPIE  
Boots (Oh So Bad and Pig Pen) 1990  
C-print, Edition 2 of 8  
Image size:  
20.3 x 20.3cm (8 x 8in)  
Framed: 37.5 x 37.5 x 3.5cm  
(14 x 14 x 1 3/8in)  
OPIE 161



- 7 CATHERINE OPIE  
Chains and Rope (Raven) 1990  
C-print, Edition 2 of 8  
Image size:  
20.3 x 20.3cm (8 x 8in)  
Framed: 37.5 x 37.5 x 3.5cm  
(14 x 14 x 1 3/8in)  
OPIE 170



- 8 CATHERINE OPIE  
Amy 1996  
C-print, Edition 3 of 8  
Image size:  
20.3 x 20.3cm (8 x 8in)  
Framed: 37.5 x 37.5 x 3.5cm  
(14 x 14 x 1 3/8in)  
OPIE 157



- 9 CATHERINE OPIE  
Angela (boots) 1992  
C-print, Edition 2 of 8  
Image size:  
20.3 x 20.3cm (8 x 8in)  
Framed: 37.5 x 37.5 x 3.5cm  
(14 x 14 x 1 3/8in)  
OPIE 159



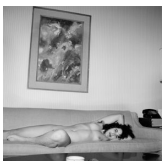
- 10 CATHERINE OPIE  
Pam (Houston Hotel) 1989  
C-print, Edition 3 of 8  
Image size:  
20.3 x 20.3cm (8 x 8in)  
Framed: 37.5 x 37.5 x 3.5cm  
(14 x 14 x 1 3/8in)  
OPIE 181



- 11 CATHERINE OPIE  
Pig Pen (studio) 1994  
C-print, Edition 3 of 8  
Image size:  
20.3 x 20.3cm (8 x 8in)  
Framed: 37.5 x 37.5 x 3.5cm  
(14 x 14 x 1 3/8in)  
OPIE 183



- 12 CATHERINE OPIE  
Capp St. House 1994  
C-print, Edition 2 of 8  
Image size:  
20.3 x 20.3cm (8 x 8in)  
Framed: 37.5 x 37.5 x 3.5cm  
(14 x 14 x 1 3/8in)  
OPIE 162



- 13 CATHERINE OPIE  
Melisa (Fairmont Hotel) 1987  
C-print, Edition 2 of 8  
Image size:  
20.3 x 20.3cm (8 x 8in)  
Framed: 37.5 x 37.5 x 3.5cm  
(14 x 14 x 1 3/8in)  
OPIE 178



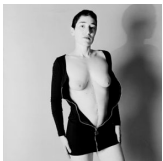
14 CATHERINE OPIE  
Angela (head) 1992  
C-print, Edition 3 of 8  
Image size:  
20.3 x 20.3cm (8 x 8in)  
Framed: 37.5 x 37.5 x 3.5cm  
(14 x 14 x 1 3/8in)  
OPIE 160



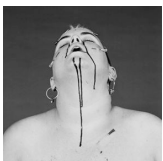
15 CATHERINE OPIE  
Pig Pen (crown of thorns) 1995  
C-print, Edition 2 of 8  
Image size:  
20.3 x 20.3cm (8 x 8in)  
Framed: 37.5 x 37.5 x 3.5cm  
(14 x 14 x 1 3/8in)  
OPIE 182



16 CATHERINE OPIE  
Daphne (New York Hotel) 1999  
C-print, Edition 2 of 8  
Image size:  
20.3 x 20.3cm (8 x 8in)  
Framed: 37.5 x 37.5 x 3.5cm  
(14 x 14 x 1 3/8in)  
OPIE 167



17 CATHERINE OPIE  
Nicola 1993  
C-print, Edition 2 of 8  
Image size:  
20.3 x 20.3cm (8 x 8in)  
Framed: 37.5 x 37.5 x 3.5cm  
(14 x 14 x 1 3/8in)  
OPIE 180



18 CATHERINE OPIE  
Julie (play piercing) 1994  
C-print, Edition 2 of 8  
Image size:  
20.3 x 20.3cm (8 x 8in)  
Framed: 37.5 x 37.5 x 3.5cm  
(14 x 14 x 1 3/8in)  
OPIE 174



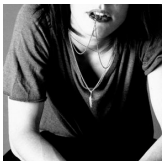
- 19 CATHERINE OPIE  
Raven (gun) 1989  
C-print, Edition 2 of 8  
Image size:  
20.3 x 20.3cm (8 x 8in)  
Framed: 37.5 x 37.5 x 3.5cm  
(14 x 14 x 1 3/8in)  
OPIE 184



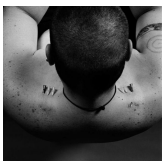
- 20 CATHERINE OPIE  
Gabby (back) 1989  
C-print, Edition 3 of 8  
Image size:  
20.3 x 20.3cm (8 x 8in)  
Framed: 37.5 x 37.5 x 3.5cm  
(14 x 14 x 1 3/8in)  
OPIE 171



- 21 CATHERINE OPIE  
Christopher 1993  
C-print, Edition 2 of 8  
Image size:  
20.3 x 20.3cm (8 x 8in)  
Framed: 37.5 x 37.5 x 3.5cm  
(14 x 14 x 1 3/8in)  
OPIE 166



- 22 CATHERINE OPIE  
Necklace (Kate) 2008  
C-print, Edition 3 of 8  
Image size:  
20.3 x 20.3cm (8 x 8in)  
Framed: 37.5 x 37.5 x 3.5cm  
(14 x 14 x 1 3/8in)  
OPIE 175



- 23 CATHERINE OPIE  
Cathy (needles by Julie) 1994  
C-print, Edition 2 of 8  
Image size:  
20.3 x 20.3cm (8 x 8in)  
Framed: 37.5 x 37.5 x 3.5cm  
(14 x 14 x 1 3/8in)  
OPIE 165



- 24 CATHERINE OPIE  
Arms (JD) 2008  
C-print, Edition 2 of 8  
Image size:  
20.3 x 20.3cm (8 x 8in)  
Framed: 37.5 x 37.5 x 3.5cm  
(14 x 14 x 1 3/8in)  
OPIE 168



- 25 CATHERINE OPIE  
Angela (crotch grab) 1992  
C-print, Edition 2 of 8  
Image size:  
20.3 x 20.3cm (8 x 8in)  
Framed: 37.5 x 37.5 x 3.5cm  
(14 x 14 x 1 3/8in)  
OPIE 158



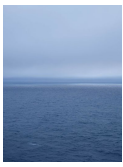
- 26 CATHERINE OPIE  
Monica 1990  
C-print, Edition 2 of 8  
Image size:  
20.3 x 20.3cm (8 x 8in)  
Framed: 37.5 x 37.5 x 3.5cm  
(14 x 14 x 1 3/8in)  
OPIE 179



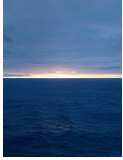
- 27 CATHERINE OPIE  
Cathy (plants by Marusya) 1992  
C-print, Edition 3 of 8 + 2 AP  
Image size:  
20.3 x 20.3cm (8 x 8in)  
Framed: 37.5 x 37.5 x 3.5cm  
(14 x 14 x 1 3/8in)  
OPIE 164



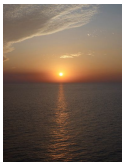
- 28 CATHERINE OPIE  
Marusya 1992  
C-print, Edition 3 of 8 + 2 AP  
Image size:  
20.3 x 20.3cm (8 x 8in)  
Framed: 37.5 x 37.5 x 3.5cm  
(14 x 14 x 1 3/8in)  
OPIE 177



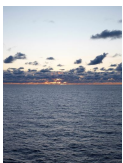
29 CATHERINE OPIE  
Sunrise #9 2009  
C-print, Edition 4 of 5 + 2 AP  
127 x 95.3cm (50 x 37.5in)  
Framed: 130 x 98.8cm  
(51 1/8 x 38 5/8in)  
OPIE 148



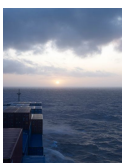
30 CATHERINE OPIE  
Sunset #9 2009  
C-print, Edition 2 of 5 + 2 AP  
127 x 95.3cm (50 x 37 1/2in)  
Framed: 129.9 x 98.1cm  
(51 1/8 x 38 5/8in)  
OPIE 155



31 CATHERINE OPIE  
Sunset #1 2009  
C-print, Edition 2 of 5 + 2 AP  
127 x 95.3cm (50 x 37 1/2in)  
Framed: 129.9 x 98.1cm  
(51 1/8 x 38 5/8in)  
OPIE 150



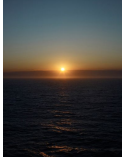
32 CATHERINE OPIE  
Sunset #2 2009  
C-print, Edition 3 of 5 + 2 AP  
127 x 95.3cm (50 x 37 1/2in)  
Framed: 129.9 x 98.1cm  
(51 1/8 x 38 5/8in)  
OPIE 151



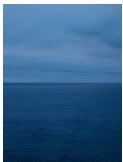
33 CATHERINE OPIE  
Sunrise #5 2009  
C-print, Edition 3 of 5 + 2 AP  
127 x 95.3cm (50 x 37 1/2in)  
Framed: 129.9 x 98.1cm  
(51 1/8 x 38 5/8in)  
OPIE 146



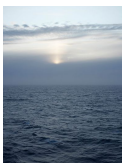
34 CATHERINE OPIE  
Sunset #5 2009  
C-print, Edition 4 of 5 + 2 AP  
127 x 95.3cm (50 x 37 1/2in)  
Framed: 129.9 x 98.1cm  
(51 1/8 x 38 5/8in)  
OPIE 153



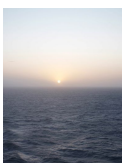
35 CATHERINE OPIE  
Sunrise #10 2009  
C-print, Edition 2 of 5 + 2 AP  
127 x 95.3cm (50 x 37.5in)  
Framed: 130 x 98.8cm  
(51 1/8 x 38 5/8in)  
OPIE 149



36 CATHERINE OPIE  
Sunset #10 2009  
C-print, Edition 3 of 5 + 2 AP  
127 x 95.3cm (50 x 37.5in)  
Framed: 130 x 98.8cm  
(51 1/8 x 38 5/8in)  
OPIE 156

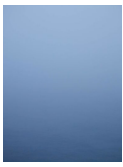


37 CATHERINE OPIE  
Sunrise #6 2009  
C-print, Edition 2 of 5 + 2 AP  
127 x 95.3cm (50 x 37 1/2in)  
Framed: 129.9 x 98.1cm  
(51 1/8 x 38 5/8in)  
OPIE 147



38 CATHERINE OPIE  
Sunset #6 2009  
C-print, Edition 2 of 5 + 2 AP  
127 x 95.3cm (50 x 37 1/2in)  
Framed: 129.9 x 98.1cm  
(51 1/8 x 38 5/8in)  
OPIE 154

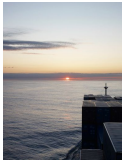




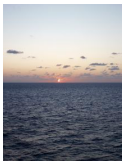
39 CATHERINE OPIE  
Sunrise #4 2009  
C-print, Edition 3 of 5 + 2 AP  
127 x 95.3cm (50 x 37 1/2in)  
Framed: 129.9 x 98.1cm  
(51 1/8 x 38 5/8in)  
OPIE 145



40 CATHERINE OPIE  
Sunset #4 2009  
C-print, Edition 2 of 5 + 2 AP  
127 x 95.3cm (50 x 37 1/2in)  
Framed: 129.9 x 98.1cm  
(51 1/8 x 38 5/8in)  
OPIE 152



41 CATHERINE OPIE  
Sunrise #2 2009  
C-print, Edition 2 of 5 + 2 AP  
127 x 95.3cm (50 x 37 1/2in)  
Framed: 129.9 x 98.1cm  
(51 1/8 x 38 5/8in)  
OPIE 144



42 CATHERINE OPIE  
Sunrise #1 2009  
C-print, Edition 2 of 5 + 2 AP  
127 x 95.3cm (50 x 37 1/2in)  
Framed: 129.9 x 98.1cm  
(51 1/8 x 38 5/8in)  
OPIE 143