

# Stephen Friedman Gallery

**Andreas Eriksson:  
19**

**5–6 Cork Street  
London, W1S 3LQ**

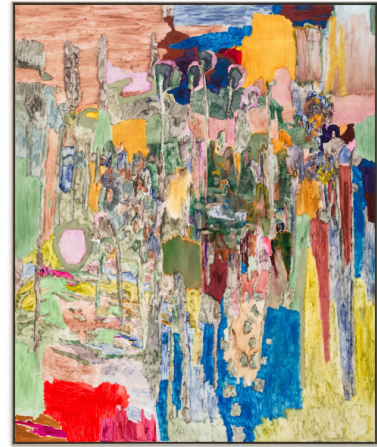
Friday 25 April –  
Saturday 24 May 2025

Opening  
Thursday 24 April, 6-8pm

Gallery hours:  
Tuesday–Friday, 10am–6pm  
Saturday 11am–5pm



*Untitled, 2024*



*Untitled, 2025*

Stephen Friedman Gallery presents *19*, a solo exhibition by Swedish artist Andreas Eriksson. Rooted in the rural landscape surrounding the artist's home and studio in Medelplana, Sweden, this new series of large-scale paintings continues Eriksson's sustained exploration of landscape painting as topography and visual contemplation. This body of work takes inspiration from the woods that the artist walks in each day with his dog. It is a dedication to the dense thickets and clearings, the knots of branches and felled trees that he passes daily. His delicate patchworks of feathered brushwork respond to the macro undulations and micro textures of his surroundings as they shift with the weather and the passing of time.

Alongside the paintings, Eriksson has produced a collection of photographs of the same landscape. He notes that he approaches his photographic response as he does his painting, and both bodies of work hold a poetic quality and a quiet emotional intensity. The photographs are printed in a small edition of hand-bound books, published in Japan.

Many of these paintings began outside. Under a corrugated roof, with fields and woods stretching out before him, Eriksson hung the canvases on a wall beyond his studio to begin work. His palette reflects these conditions, growing moodier and brighter with the shifting sunlight. His winter painting produced rich and earthy pieces in pine green, browns and midnight blue. As the sun began to rise a little earlier, day by day, pink, scarlet and warm ochre were woven in. In this series, the artist has moved away from sketching out his compositions, instead painting directly onto the canvas. The works are imbued with something of this immediacy and this raw, outdoor exposure. They develop Eriksson's characteristic visual language with their deep and varied palette and built-up portions of finely textured brushstrokes.

Eriksson cites Günther Forg's rhythmic mark-making, and David Novros's and Barbro Östlihn's treatments of space as an influence in his practice. He admires the way that Östlihn "beautifully encloses the canvas with her immediate surroundings." His work also recalls Clyfford Still's exploration of colour's expressive potential, and Helen Frankenthaler's notion of the picture plane.

Of his own work, which encompasses painting, print, photography, tapestry, sculpture and installation, Eriksson remarks, "There is a connection between the way I put the paint onto the canvas and the structure of the tapestries. Sometimes the paintings look woven because I often apply horizontal or vertical strokes, just like in the process of weaving." Complicating these material binaries, his works are experiential: visual manifestations of his perception of the landscape in front of him. He says, "The paintings act as windows, rather than a picture of a landscape." They are ways of looking at the natural world.

# Stephen Friedman Gallery

## Contact Us

For press enquiries please contact:  
press@stephenfriedman.com

For sales enquiries please contact:  
sales@stephenfriedman.com

For further details please contact:  
info@stephenfriedman.com

## Social Media

Facebook:  
Stephen-Friedman-Gallery

Instagram & Threads:  
@stephenfriedmangallery

X:  
@SFGalleryLondon

## Notes to editors

### About Andreas Eriksson

**Hovering between abstraction and figuration, Andreas Eriksson's meditative works can be interpreted as patchwork topographies or details of organic forms such as trees, earth and rock formations.**

Andreas Eriksson was born in 1975 in Björsäter, Sweden. He lives and works in Lidköping, Sweden.

Eriksson's artistic practice encompasses a wide range of media including painting, photography, sculpture, tapestry and installation. Rendered in earthy and botanical hues, his works are understated yet possess a poetic quality which has a lasting effect on the viewer.

The emotional intensity of Eriksson's work is the result of a sustained exploration of his response to the natural world. Since 2000 the artist has lived in a house situated in a forest on the edge of a lake. Small events and phenomena from his everyday life and the surrounding landscape give his formal and conceptual decision-making process a firm context.

A major solo exhibition of Eriksson's work opened at Lillehammer Kunstmuseum in 2024, accompanied by a catalogue. A significant monograph on the artist's practice was also released by Sveriges Allmänna Konstförening in December 2021, alongside an exhibition at Galleri Flach, Stockholm. Eriksson had a major solo presentation at Skissernas Museum, Lund in June 2021 and an exhibition of watercolours, drawings and tapestries at Nordic Watercolour Museum, Tjörn in September 2020. Eriksson was commissioned to create a public painting for the main entrance of New Karolinska Hospital in Stockholm in 2017. His work was exhibited at the 30th São Paulo Biennial, São Paulo (2012) and The Nordic Pavilion, 54<sup>th</sup> Venice Biennale in 2011.

Other notable solo exhibitions include: 'Roots', Vänermuseet and Lidköping Kunsthall, Lidköping, Sweden (2023); 'Andreas Eriksson', Artspace de 11 Linjen Griet Dupont Foundation, Oudenburg, Belgium (2021); 'Cutouts, Mistakes and Threads', Braunsfelder Family Collection, Cologne, Germany (2019); 'Work in Progress', Skissernas Museum, Lund, Sweden (2017); 'Roundabouts', Bonniers Konsthall, Stockholm, Sweden which toured to Trondheim Kunstmuseum, Trondheim, Norway; Centre PasquArt, Biel, Switzerland and Reykjavik Art Museum, Reykjavik, Iceland (2014-2015). 'Roundabout the hardship of believing' and 'Walking the Dog, Lying on the Sofa,' MUMOK, Vienna, Austria (2008).

Eriksson's works are included in prominent collections internationally including Centre Pompidou, Paris, France; FRAC, Auvergne, France; MUMOK, Vienna, Austria; Nasjonalmuseet, Oslo, Norway; Gothenburg Museum of Art, Gothenberg, Sweden; Moderna Museet, Stockholm, Sweden; Skövde Art Museum, Skövde, Sweden; National Public Art Council, Sweden; Sundsvall Museum, Sundsvall, Sweden; Uppsala Art Museum, Uppsala, Sweden; British Museum, London, England and X Museum, Beijing, China.

## Stephen Friedman Gallery

Stephen Friedman Gallery is a contemporary art gallery that was founded in 1995 with a focus on representing exceptional artists from around the world. Since its inauguration, the gallery has been based in Mayfair, London. In October 2023, the gallery expanded and relocated to Cork Street. In November 2023, the gallery opened its first location outside the UK at 54 Franklin Street in Tribeca, New York.