

Stephen Friedman Gallery

Evening Standard
Selfridges reveals its own Fourth Plinth-style art commission
Allis Brennan
15 May 2018

Evening Standard

Selfridges reveals its own Fourth Plinth-style art commission

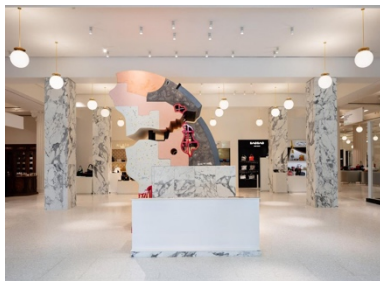


Image: Installation Shot, Holly Hendry

Selfridges may be an emporium of the finer things in life, but it is better known for showcasing high-end handbags than it is fine art.

The famous department store has, however, welcomed its very own version of Trafalgar Square's Fourth Plinth.

The Art Block will host six month long commissions inside the store, and is open from today.

The project has been created in partnership with Yorkshire Sculpture Park, whose Senior Curator Helen Pheby will be responsible for choosing the artists and artwork on show.

The Art Block will consist of a marble and steel monolith designed by renowned architect David Chipperfield, who has also been working with Selfridges on the design of their new Accessories Hall.

The first commission to take to the Block will be by up-and-coming London-based artist Holly Hendry, who will be showing an artwork called Phyllis, which will pay tribute to a digging machine of the same name that had to be left underground after excavating a four mile tunnel for London Crossrail.

The four metre sculpture will be made partly from the rubble created in the construction of the new hall, as well as silicone, marble, ash and lipstick pigment.